

Do you want to forget your boiler? Think SAINT-ROCH MELIOR and make life easier!

THE REFERENCE FOR MEDIUM POWER BOILER

The SAINT-ROCH MELIOR is a medium power boiler that can be equipped with a forced draught fuel oil or gas burner. It has a cast iron heating body with a very high resistance to the condensation and satisfies all individual, collective and industrial heating needs.



SOLID SAINT ROCH COUVIN QUALITY



The heating elements are engineered to ensure high efficiency and boiler safety. The combustion chamber is well designed, ensuring full exposure to burner heat, preventing the formation of dangerous inner stresses and reducing consumption of fuel/gas, emissions.



WHEN THE SPACE IS PRECIOUS

Particularly adapted for old buildings with difficult access or for new apartment blocks, The SAINT-ROCH MELIOR is the best solution in term of compactness and making the installation in small spaces easier. The boiler is installed very quickly.



EASY MAINTENANCE

The SAINT-ROCH MELIOR is designed with a hinged door that pivots left and right allowing complete access to the entire boiler body which makes cleaning the boiler such an easy task. Only horizontal cleaning is required.



COMPLETE EQUIPMENT

A cast iron heating body with assembled elements.

The control panel includes :

- Circuit for regulator.
- ON /OFF switch.
- Boiler thermostat.
- Boiler thermometer.
- Safety thermostat.
- Pre-equipped housing for regulation.



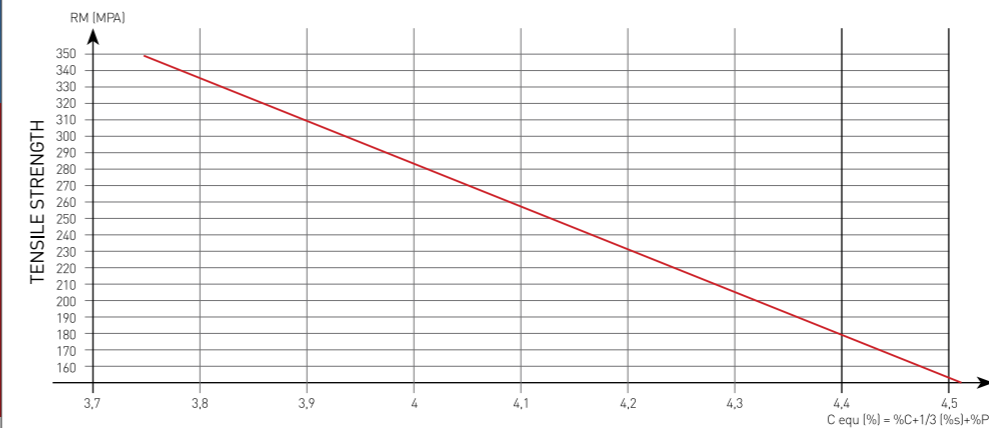
ECO GROUPAGE

The range of SAINT-ROCH MELIOR can be configured as cascade. The fractionning of the power leads to the separate start of each boiler according to the demand. This achieves output matching, optimised to the demand.

It result an important reduction of consumption and a rise of economical benefits.

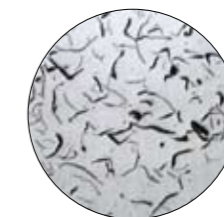
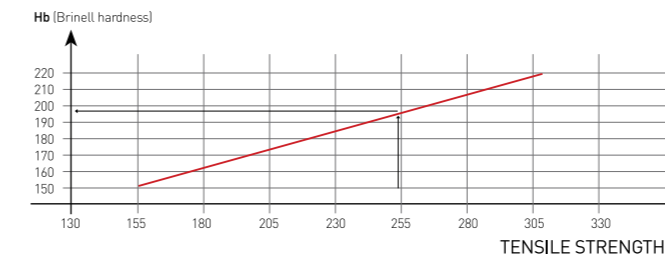


SAINT ROCH HYPOEUTECTIC GREY CAST-IRON



The Saint Roch Cast Iron makes the ideal compromise between tensile strength and brinell Hardness. It provides optimal heat storage and transfer with it's fine and regular graphite repartition.

HYPOEUTECTIC GREY CAST-IRON FLAKE GRAPHITE

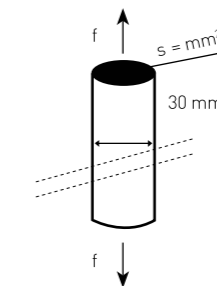


Flake graphite

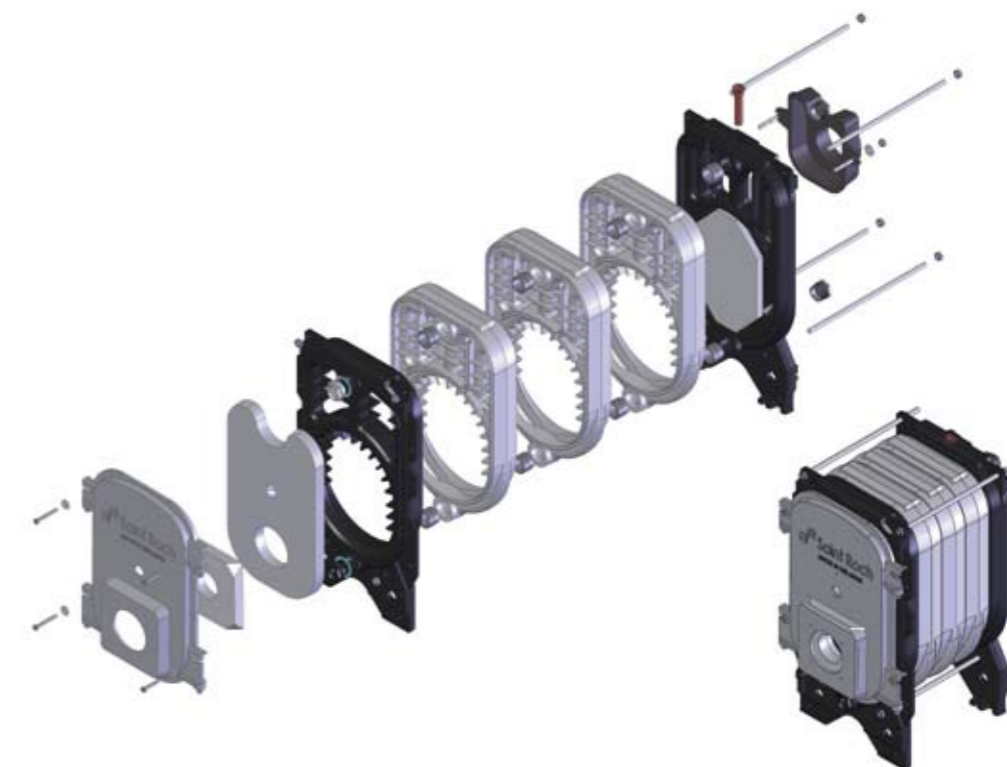
- **HIGH SI CONTENT**
 - Homogeneous fine flake graphite distribution
 - Pearlite-ferrite structure.
- **LOW PHOSFOR CONTENT**
 - Excellent moulding capacity.
 - **Less production of steatite.**
 - Excellent heat transmission
 - Water corrosion resistant (Pearlite structure).
 - High mechanical strength.
 - Excellent thermal shocks resistance.

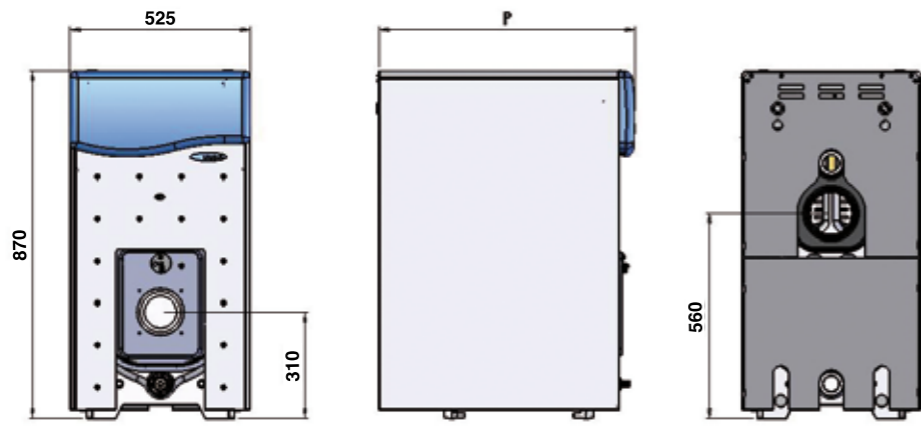
TENSILE STRENGTH $\sigma_t = \frac{F}{S}$

	σ_t	σ_t
GG 20	20 kg/mm ²	196 N/mm ²
GG 25	25 kg/mm ²	245 N/mm ²
Saint Roch	24,36 kg/mm ²	238,6 N/mm ²



SAINT-ROCH MELIOR





MELIOR



SAINT ROCH MELIOR

Technical Data

Model		M4	M5	M6	M7	M8	M9
Number of sections		4	5	6	7	8	9
Thermal output	Kw	34	45	56	65	74	83
Efficiency at 100% output	%	90.3	90.3	90.2	90.4	90.4	90.2
Efficiency at 30% output	%	91	91	91	91	91	91
Flue gas temperature	C	230	230	230	230	230	230
Load loss combustion circuit	mbar	0.06	0.08	0.12	0.2	0.27	0.35
Load loss water side	mbar	0.8	1.3	2.3	3.9	5.7	7.7
Water capacity	L	13.5	16.4	19.3	22.2	25.1	28
Maximum operating pressure	Bar	4	4	4	4	4	4
Combustion chamber diameter	mm	300*270	300*270	300*270	300*270	300*270	300*270
Combustion chamber length	mm	248	331	414	497	580	663
Flue gas connection	mm	125/130	125/130	125/130	150	150	150
Burner connection	mm	115	115	115	115	115	115
Supply connection	"G	1 1/4	1 1/4	1 1/4	1 1/4	1 1/4	1 1/4
Return connection	"G	1 1/4	1 1/4	1 1/4	1 1/4	1 1/4	1 1/4
Drain connection	"G	1/2	1/2	1/2	1/2	1/2	1/2
Weight (estimated)	Kg	131	154	180	205	228	251
P	mm	415	500	585	670	755	840



CAST IRON LOW TEMPERATURE OIL FIRED BOILER
RATED OUTPUT: 34 TO 83 KW



WARMTH AT YOUR FINGERTIPS



FOR MAXIMUM COMFORT AND EFFICIENCY



ROBUST AND DURABLE QUALITY



EASY TO INSTALL

Together, preserve the future of our children

YOUR DISTRIBUTOR

Heating Cooling & Sanitary Equipments Co.

Fleifel Heating

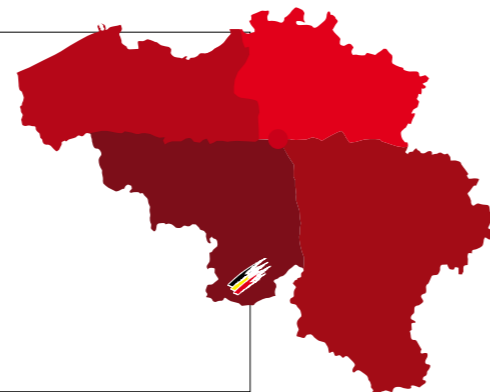
34 Abdel Monem Reyad St.

Tel. : 464 7722

Fax : 464 7723

P.O.Box 766 Amman 11118 JORDAN

fleifelcolive@umniahlive.net



Rue de la Gare 36 - B-5660 COUVIN

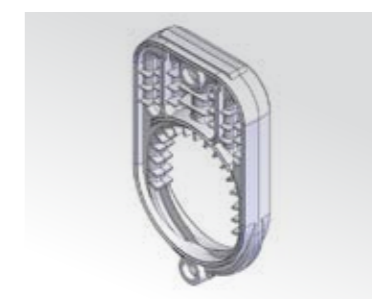
Tel. : +32 (0)60/34 56 51

Fax : +32 (0)60/34 62 28

info@saintrochcouvin.com

www.saintrochcouvin.com

The manufacturer reserves the right to modify the characteristics of models described in this document without notice, to remain at the leading edge of progress.



HIGH EFFICIENCY CAST IRON SECTIONAL BOILER



TOP TECHNOLOGY BY DESIGN